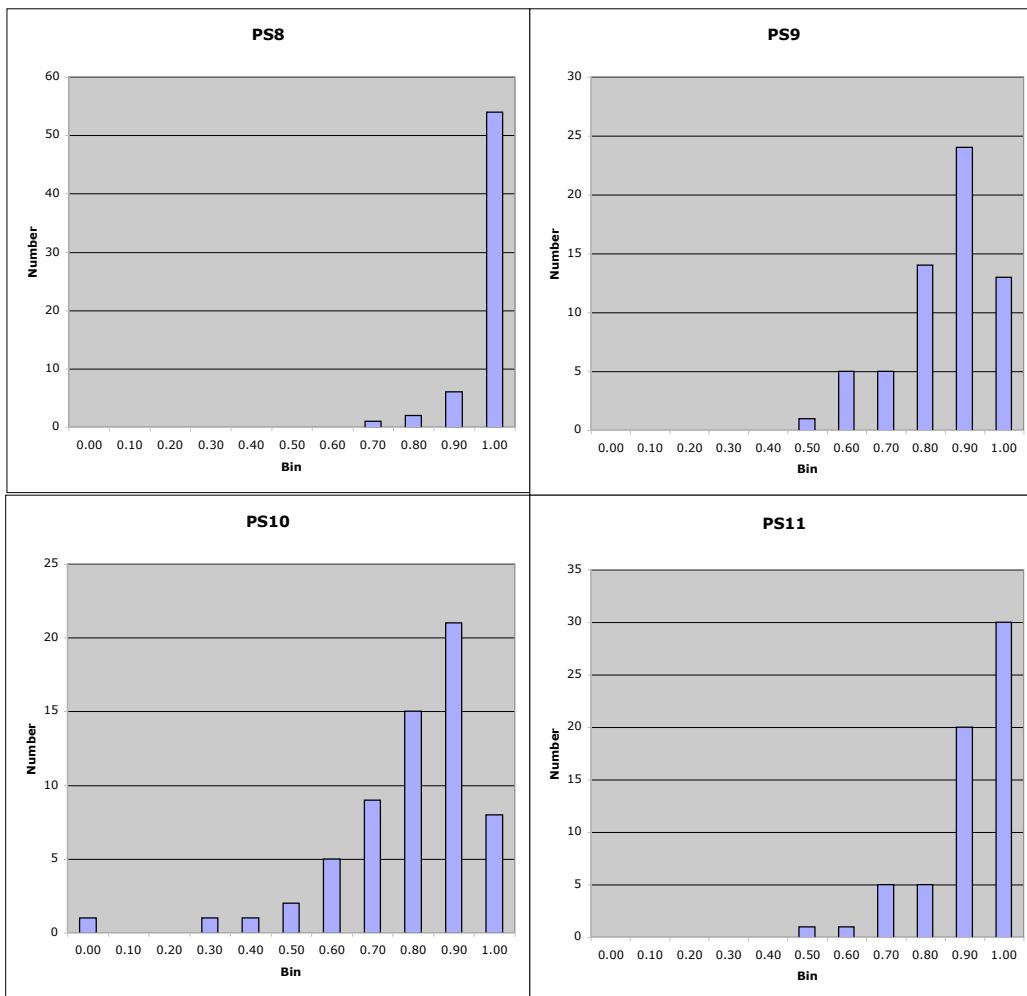
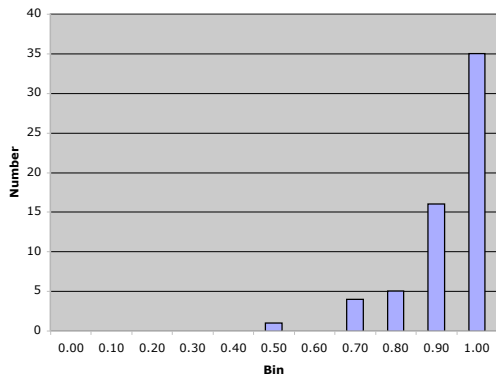


bin	PS8	PS9	PS10	PS11	PS12	PS13	PS14
-0.10	2	3	2	3	4	4	7
0.00	0	0	1	0	0	0	0
0.10	0	0	0	0	0	0	0
0.20	0	0	0	0	0	0	0
0.30	0	0	1	0	0	0	1
0.40	0	0	1	0	0	0	3
0.50	0	1	2	1	1	3	0
0.60	0	5	5	1	0	2	1
0.70	1	5	9	5	4	2	4
0.80	2	14	15	5	5	11	8
0.90	6	24	21	20	16	18	23
1.00	54	13	8	30	35	25	18
<b>total turned in</b>	<b>63</b>	<b>62</b>	<b>63</b>	<b>62</b>	<b>61</b>	<b>61</b>	<b>58</b>
<b>median score</b>	30	25.05	31	36	28	36	26
<b>median fractional score</b>	<b>1.00</b>	<b>0.84</b>	<b>0.78</b>	<b>0.90</b>	<b>0.93</b>	<b>0.90</b>	<b>0.87</b>
<b>mean score</b>	29	24	30	35	27	34	25
<b>mean fractional score</b>	<b>0.96</b>	<b>0.80</b>	<b>0.76</b>	<b>0.87</b>	<b>0.89</b>	<b>0.86</b>	<b>0.82</b>
<b>sum of squares</b>	58.70	41.15	38.13	48.01	49.22	46.32	41.01
<b>stdev</b>	0.07	0.13	0.18	0.11	0.11	0.14	0.17

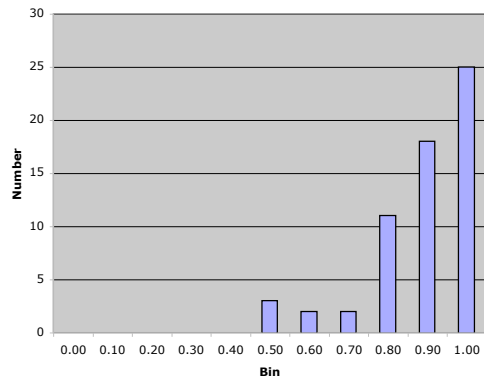
Histogram bin labels indicate the upper end of the bin; e.g. 0.80 -> scores between 0.70 and 0.80



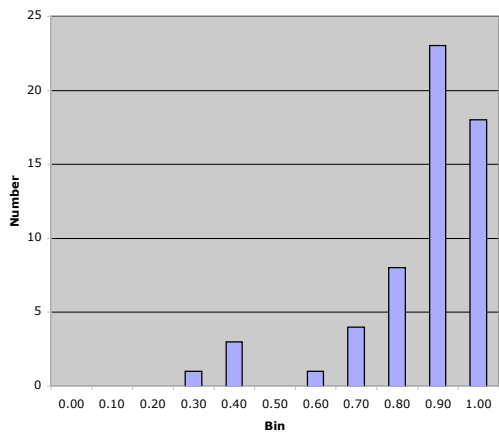
**PS12**



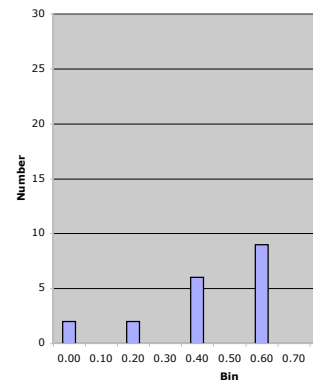
**PS13**



**PS14**

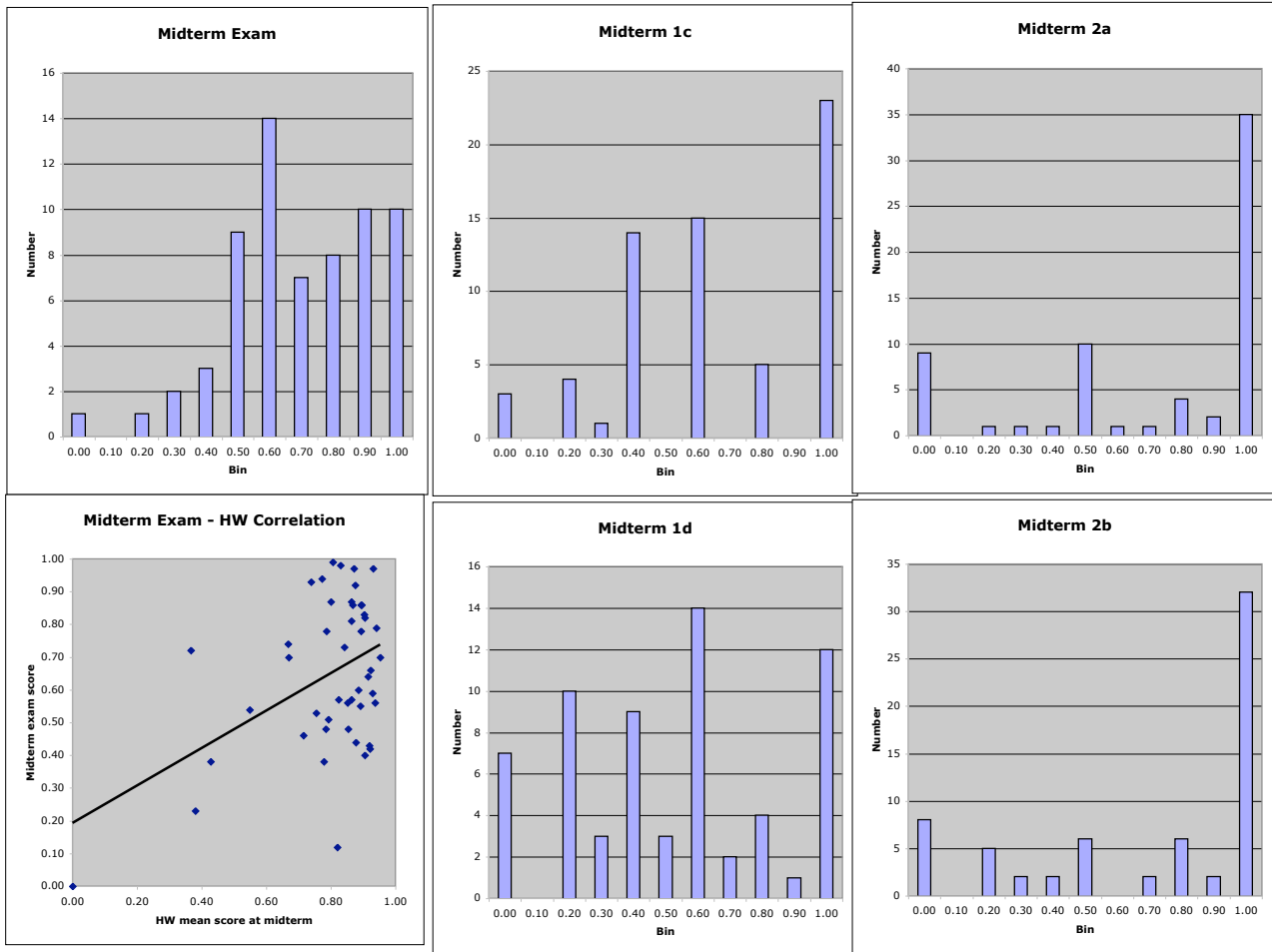


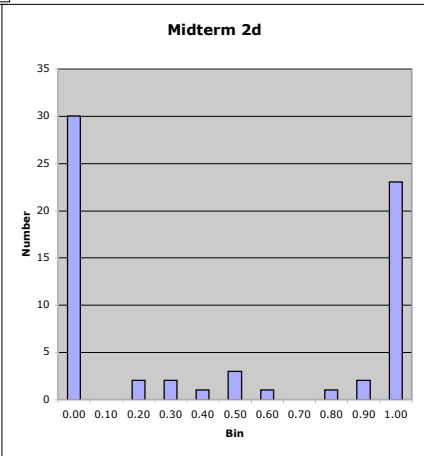
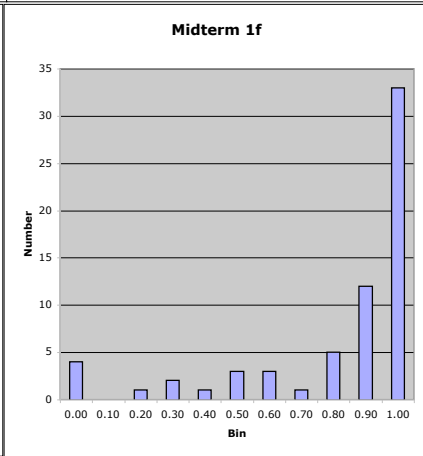
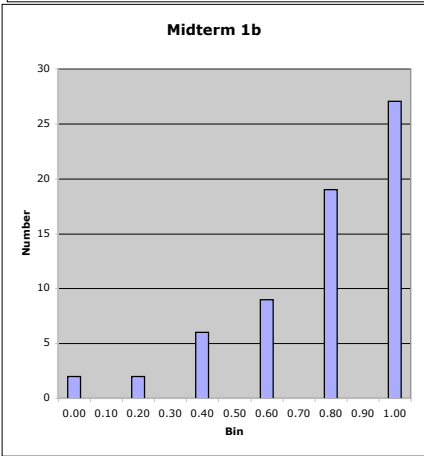
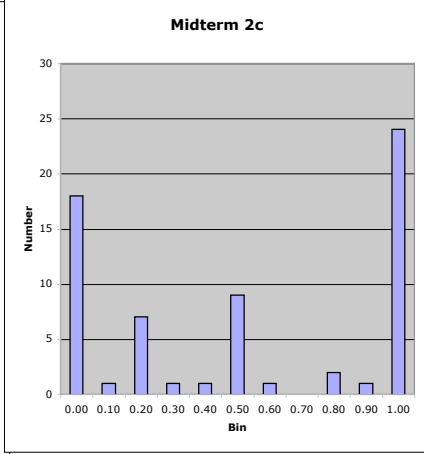
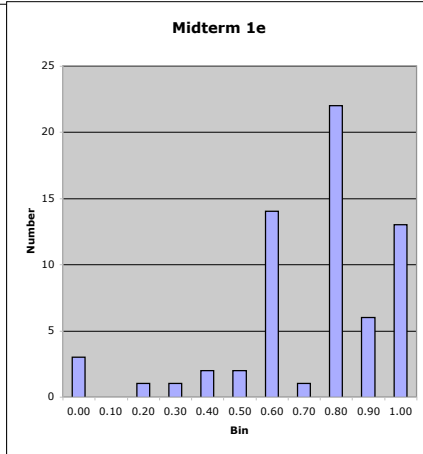
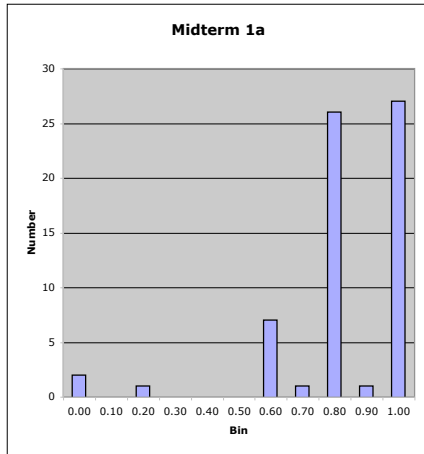
**Midterm 1b**



bin	Midterm 1a	Midterm 1b	Midterm 1c	Midterm 1d	Midterm 1e	Midterm 1f	Midterm 2a	Midterm 2b	Midterm 2c	Midterm 2d	Midterm Exam
-0.10	0	0	0	0	0	0	0	0	0	0	0
0.00	2	2	3	7	3	4	9	8	18	30	1
0.10	0	0	0	0	0	0	0	0	1	0	0
0.20	1	2	4	10	1	1	1	5	7	2	1
0.30	0	0	1	3	1	2	1	2	1	2	2
0.40	0	6	14	9	2	1	1	2	1	1	3
0.50	0	0	0	3	2	3	10	6	9	3	9
0.60	7	9	15	14	14	3	1	0	1	1	14
0.70	1	0	0	2	1	1	1	2	0	0	7
0.80	26	19	5	4	22	5	4	6	2	1	8
0.90	1	0	0	1	6	12	2	2	1	2	10
1.00	27	27	23	12	13	33	35	32	24	23	10
<b>total turned in</b>	<b>65</b>	<b>65</b>	<b>65</b>	<b>65</b>	<b>65</b>	<b>65</b>	<b>65</b>	<b>65</b>	<b>65</b>	<b>65</b>	<b>65</b>
<b>median score</b>	4	4	3	8	12	14	10	9	5	3	66
<b>median fractional score</b>	<b>0.80</b>	<b>0.80</b>	<b>0.60</b>	<b>0.53</b>	<b>0.80</b>	<b>0.93</b>	<b>1.00</b>	<b>0.90</b>	<b>0.50</b>	<b>0.30</b>	<b>0.66</b>
<b>mean score</b>	4	4	3	7	11	12	7	7	5	4	65
<b>mean fractional score</b>	<b>0.83</b>	<b>0.78</b>	<b>0.66</b>	<b>0.50</b>	<b>0.70</b>	<b>0.80</b>	<b>0.73</b>	<b>0.70</b>	<b>0.52</b>	<b>0.45</b>	<b>0.65</b>
<b>sum of squares</b>	47.50	43.44	34.09	22.83	35.43	46.60	42.82	40.64	29.24	26.79	30.78
<b>stdev</b>	0.21	0.26	0.30	0.32	0.23	0.29	0.36	0.37	0.42	0.46	0.22

Histogram bin labels indicate the upper end of the bin; e.g. 0.80 -> scores between 0.70 and 0.80





bin	Final 1	Final 2	Final 3	Final 4	Final Exam
-0.10	0	0	0	0	0
0.00	5	7	4	8	4
0.10	2	1	0	0	1
0.20	7	4	0	0	2
0.30	1	0	1	0	0
0.40	4	1	5	0	2
0.50	4	0	4	6	2
0.60	10	3	7	4	4
0.70	5	0	3	5	8
0.80	3	3	10	5	10
0.90	5	0	11	3	16
1.00	19	46	20	34	16
<b>total turned in</b>	<b>65</b>	<b>65</b>	<b>65</b>	<b>65</b>	<b>65</b>
<b>median score</b>	15	25	20	23	79
<b>median fractional score</b>	<b>0.60</b>	<b>1.00</b>	<b>0.80</b>	<b>0.92</b>	<b>0.79</b>
<b>mean score</b>	15	20	18	18	71
<b>mean fractional score</b>	<b>0.60</b>	<b>0.79</b>	<b>0.71</b>	<b>0.74</b>	<b>0.71</b>
<b>sum of squares</b>	30.94	49.16	37.60	42.41	37.88
<b>stdev</b>	0.33	0.36	0.27	0.33	0.28

Histogram bin labels indicate the upper end of the bin; e.g. 0.80 -> scores between 0.70 and 0.80

