

VALUE

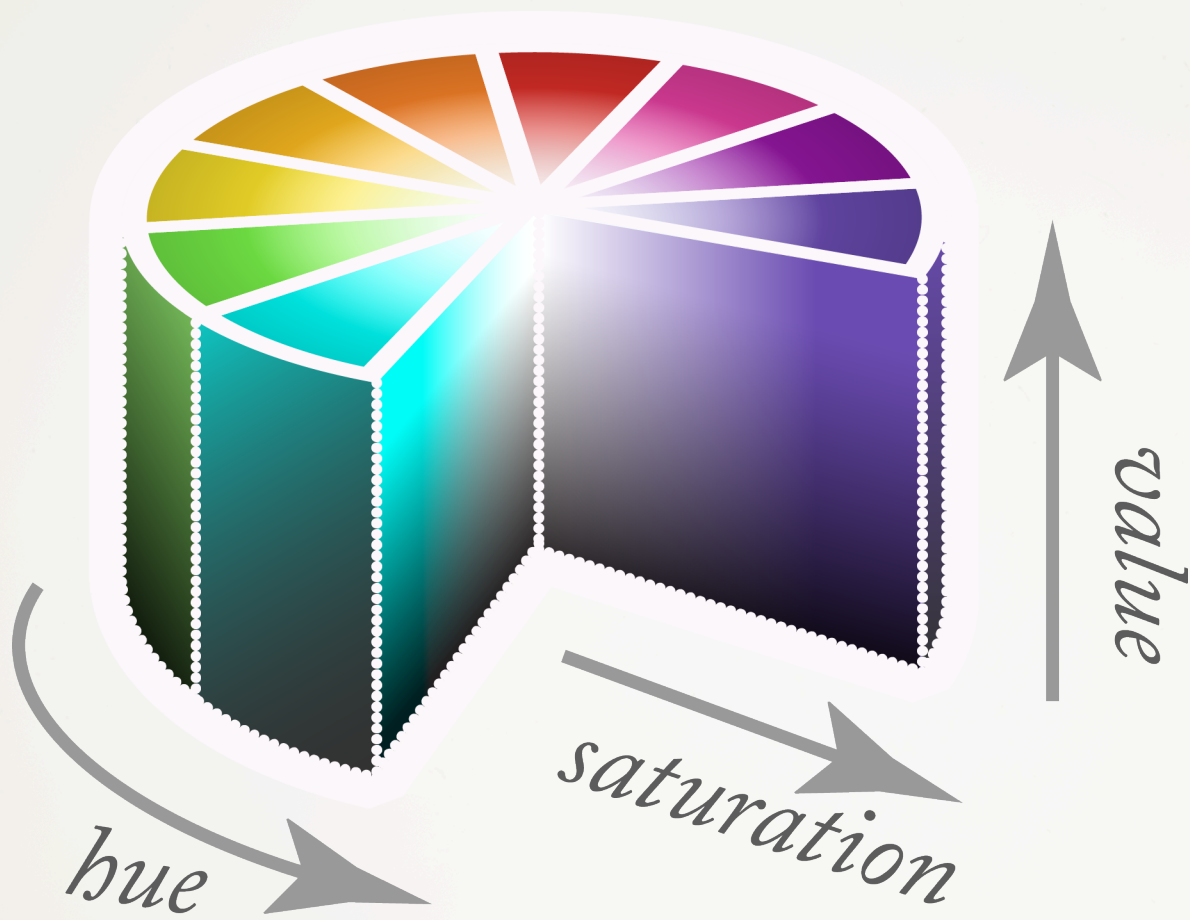


NOTES ON USE OF COLOR



COLOR







COMPLIMENTARY



TRILADIC



SQUARE



ANALOGOUS



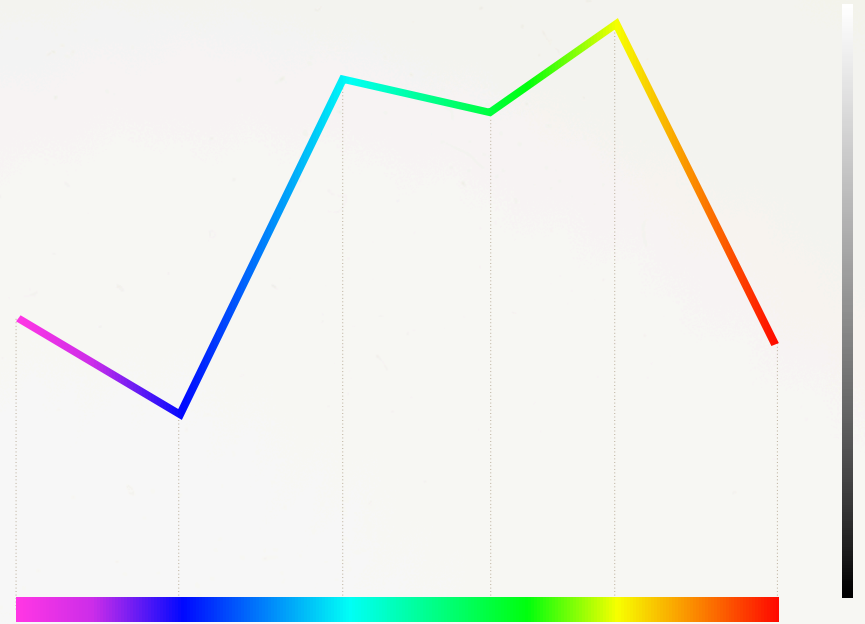
SPLIT COMPLIMENT



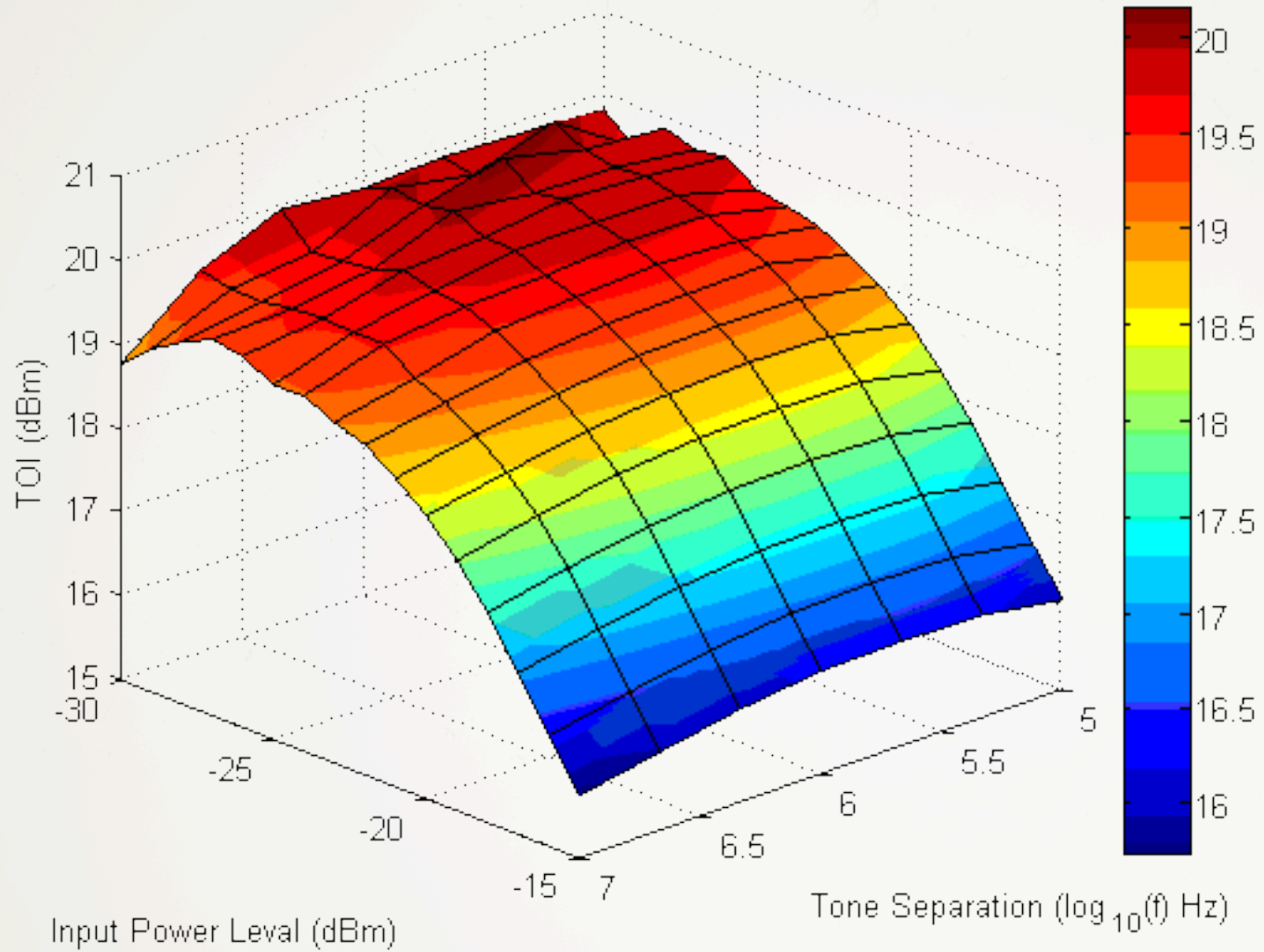
TETRATIC



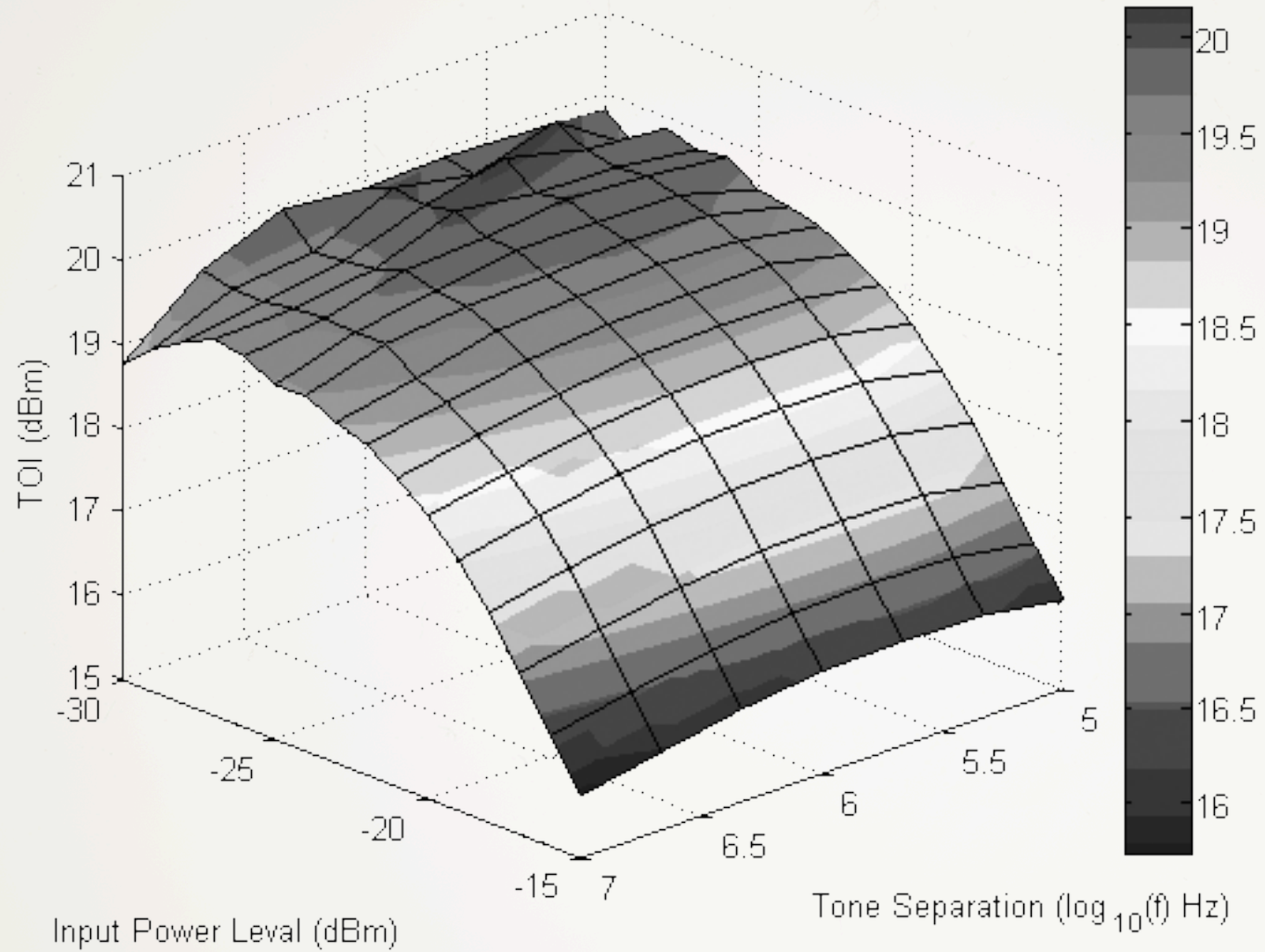


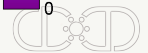
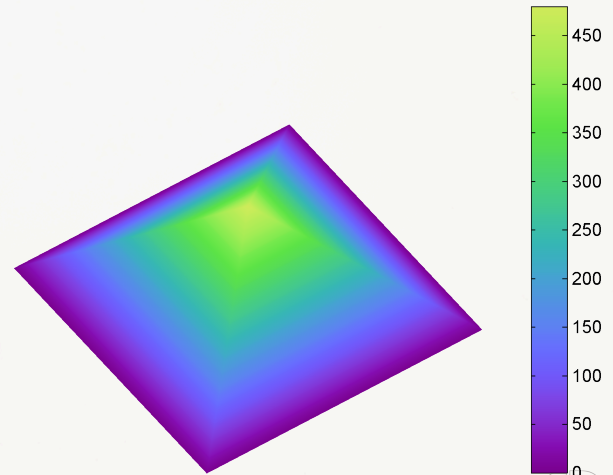
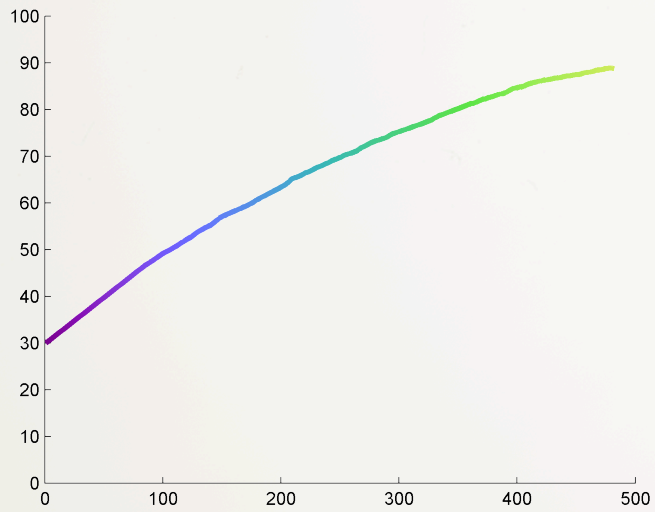
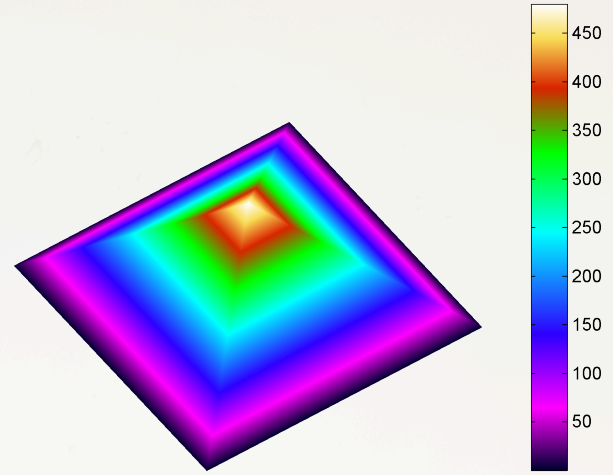
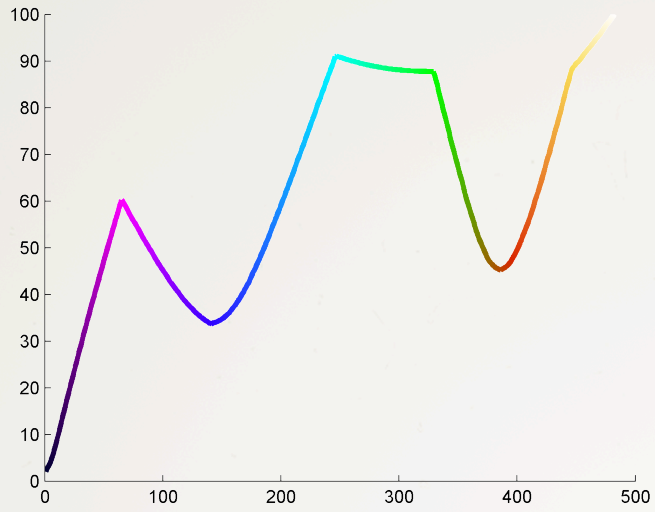


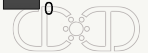
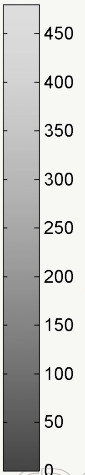
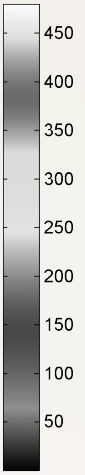
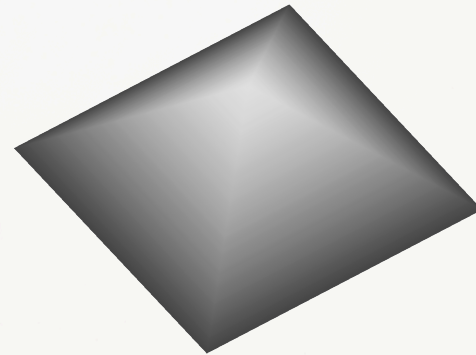
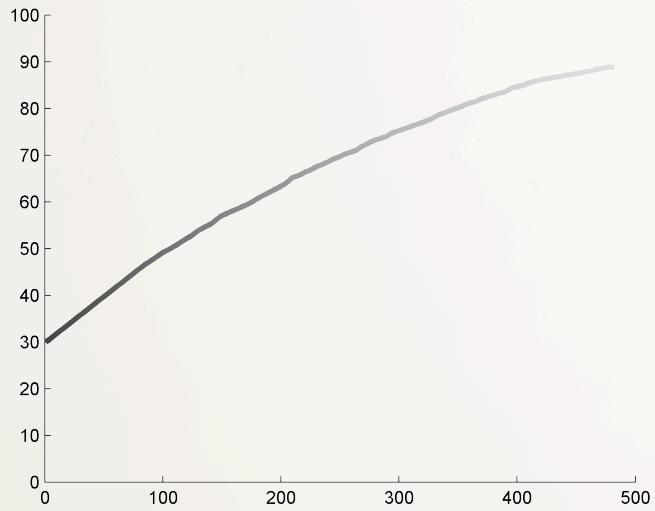
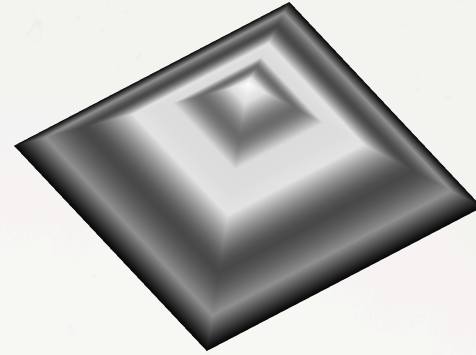
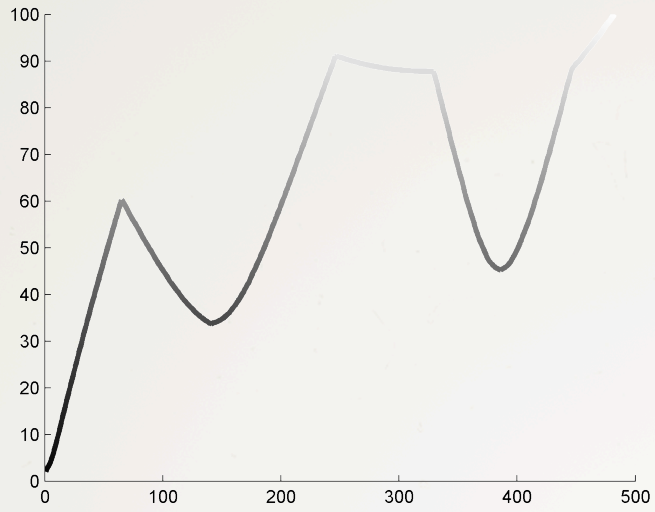
TOI vs Input Level and Tone Separation (Center = 1000 MHz)

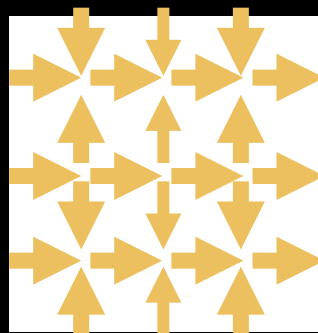
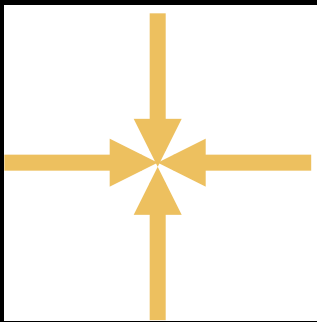
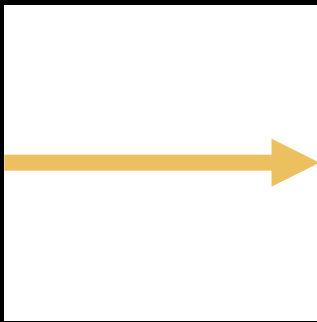
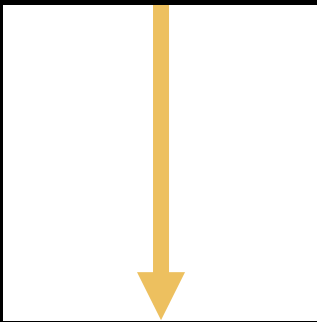


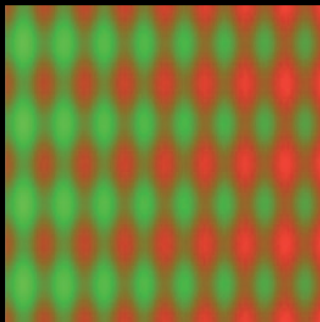
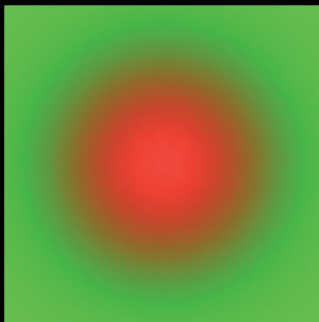
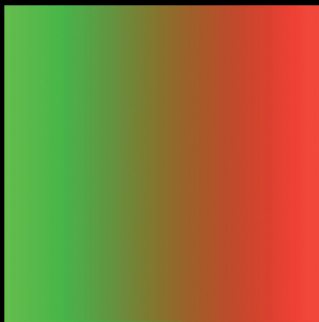
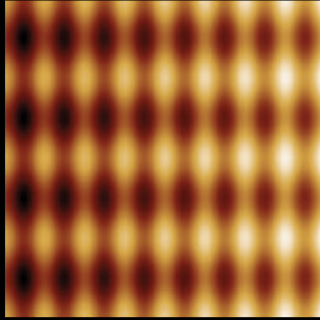
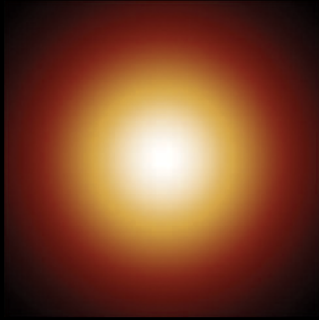
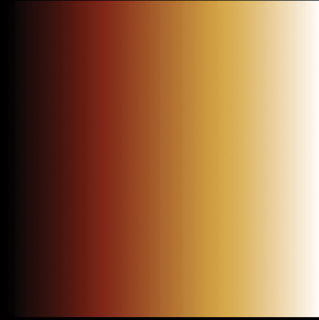
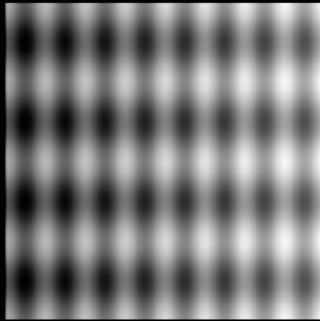
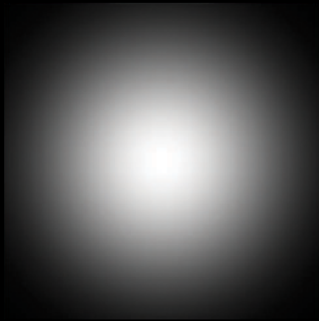
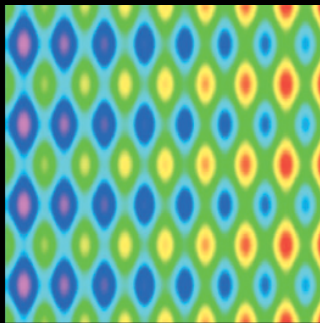
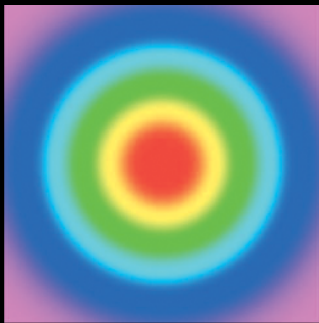
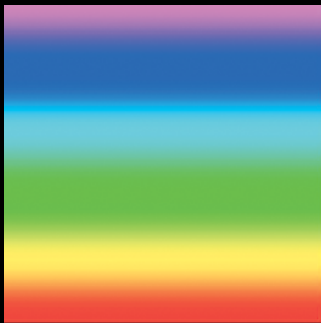
TOI vs Input Level and Tone Separation (Center = 1000 MHz)

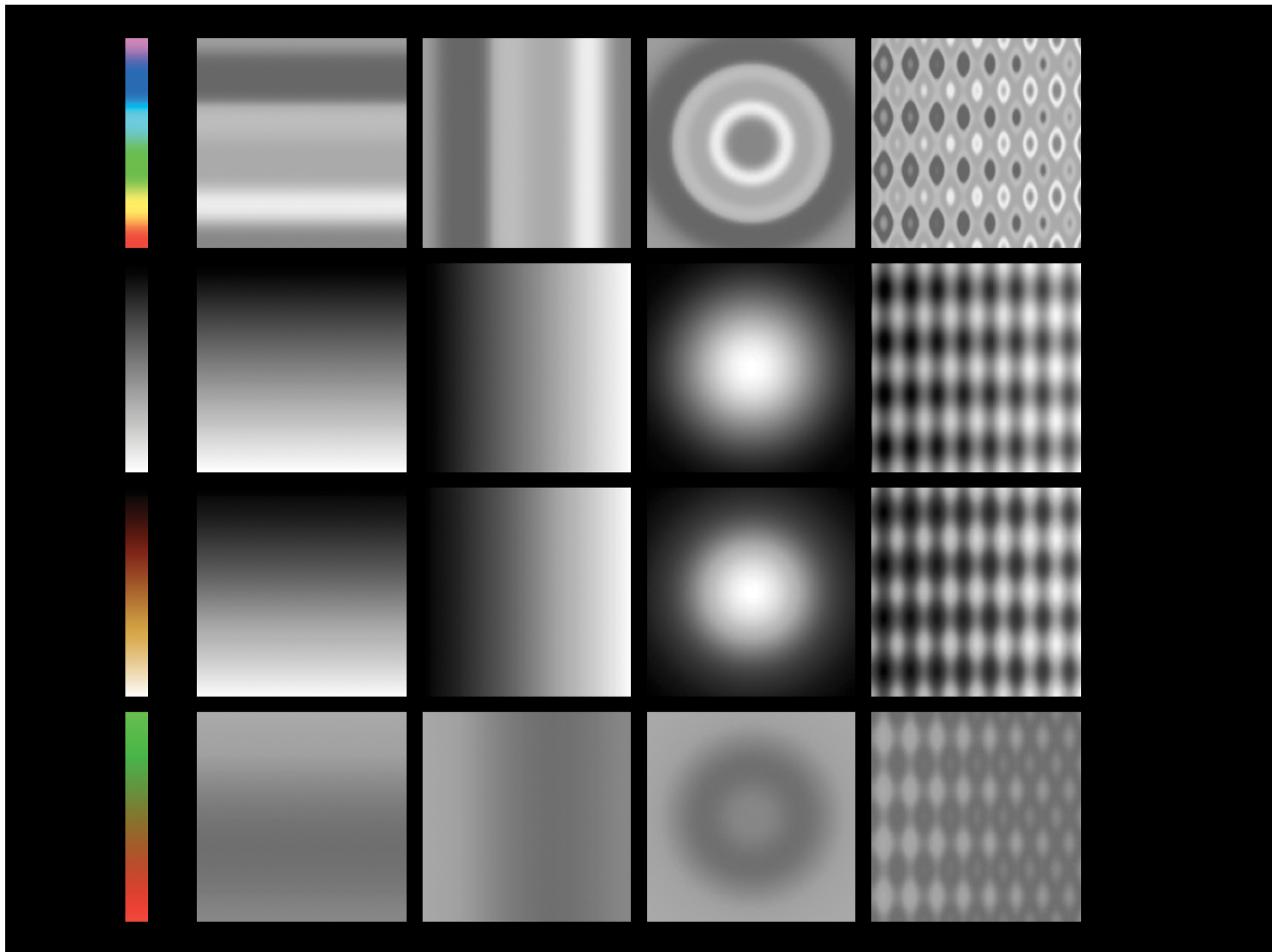


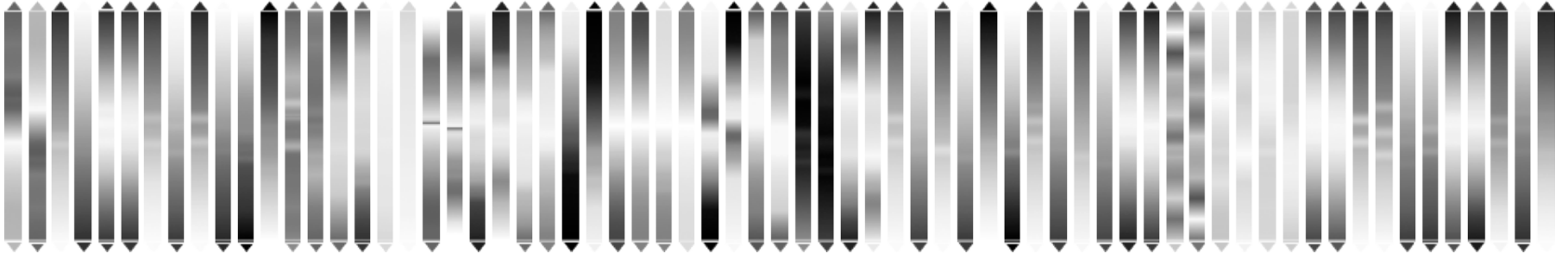
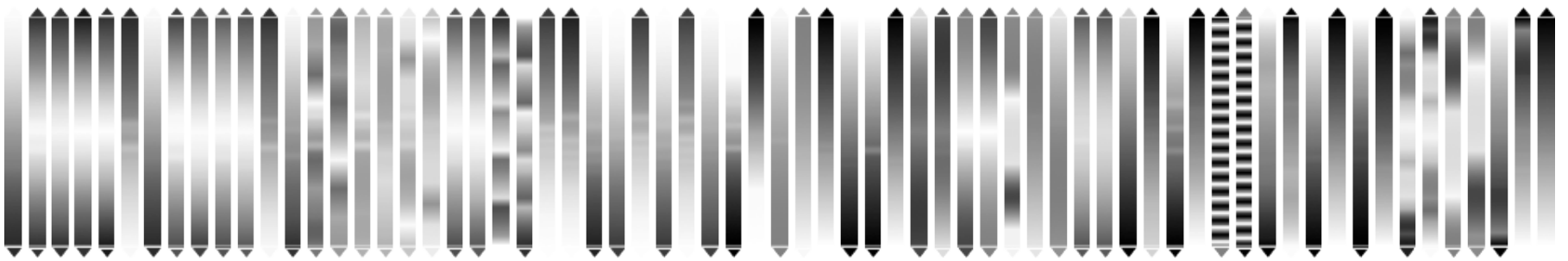
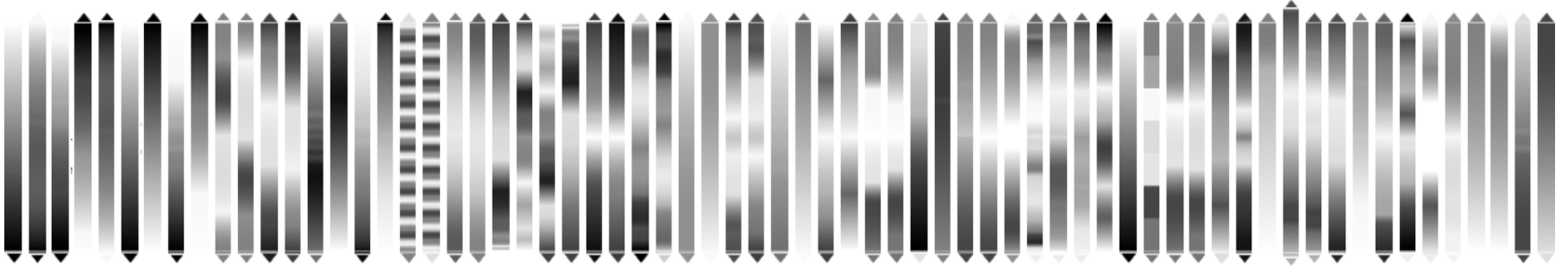


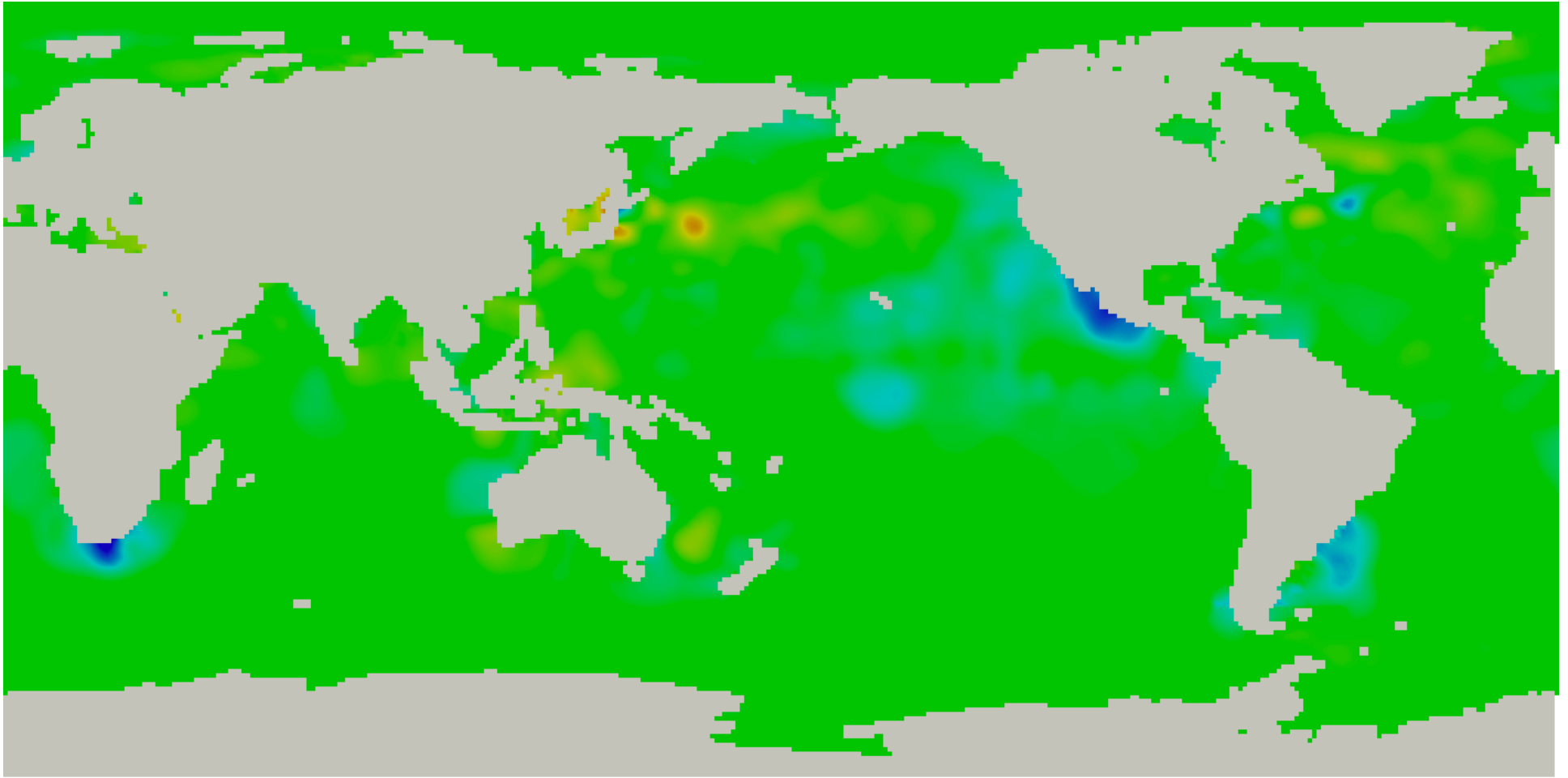




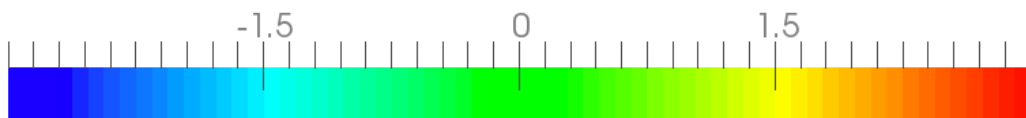


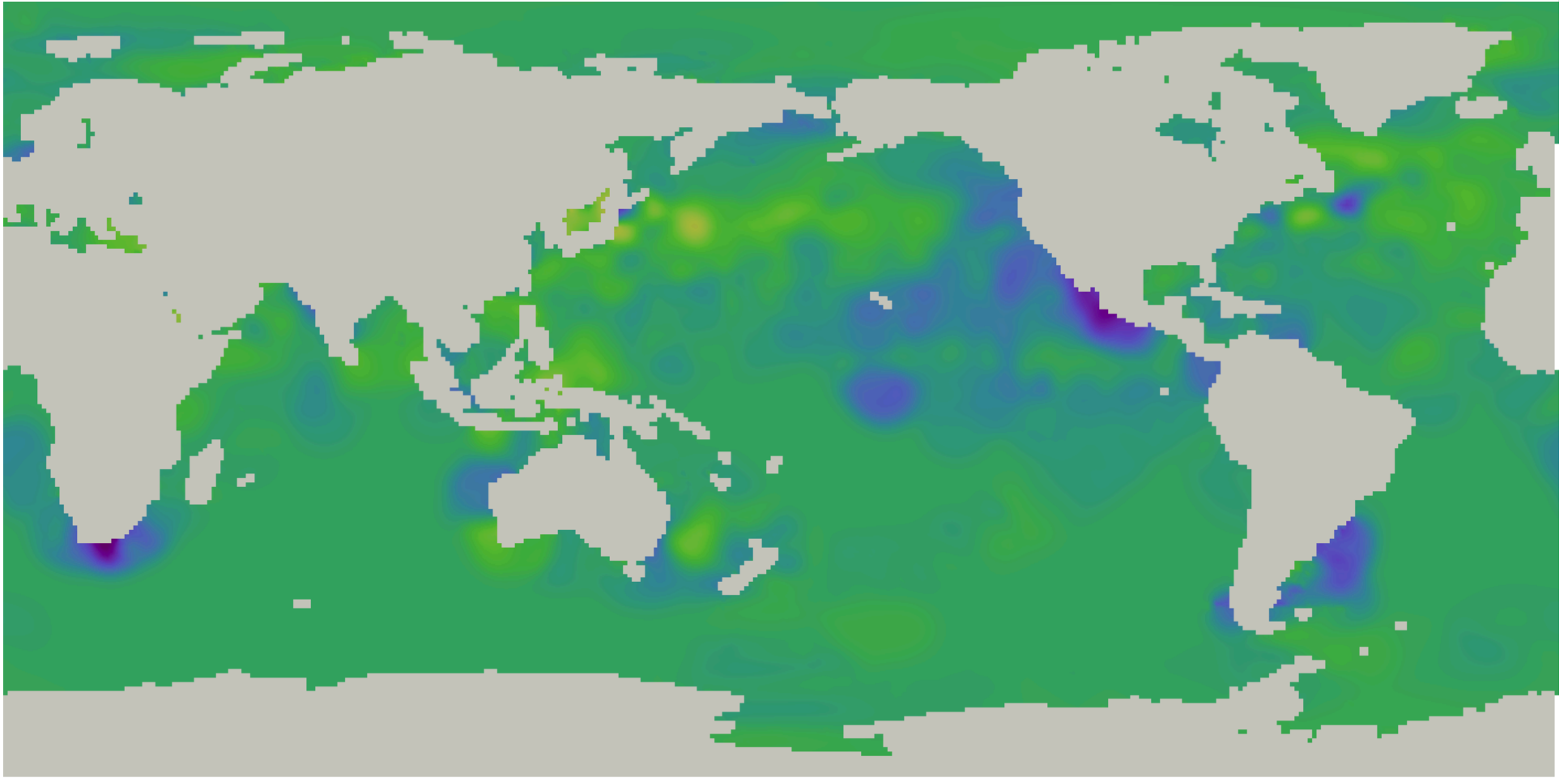




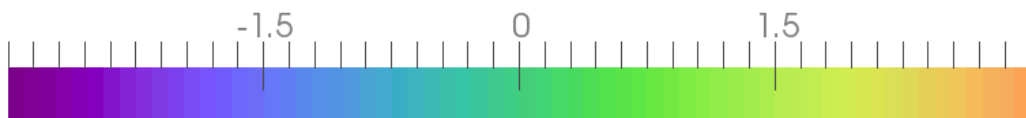


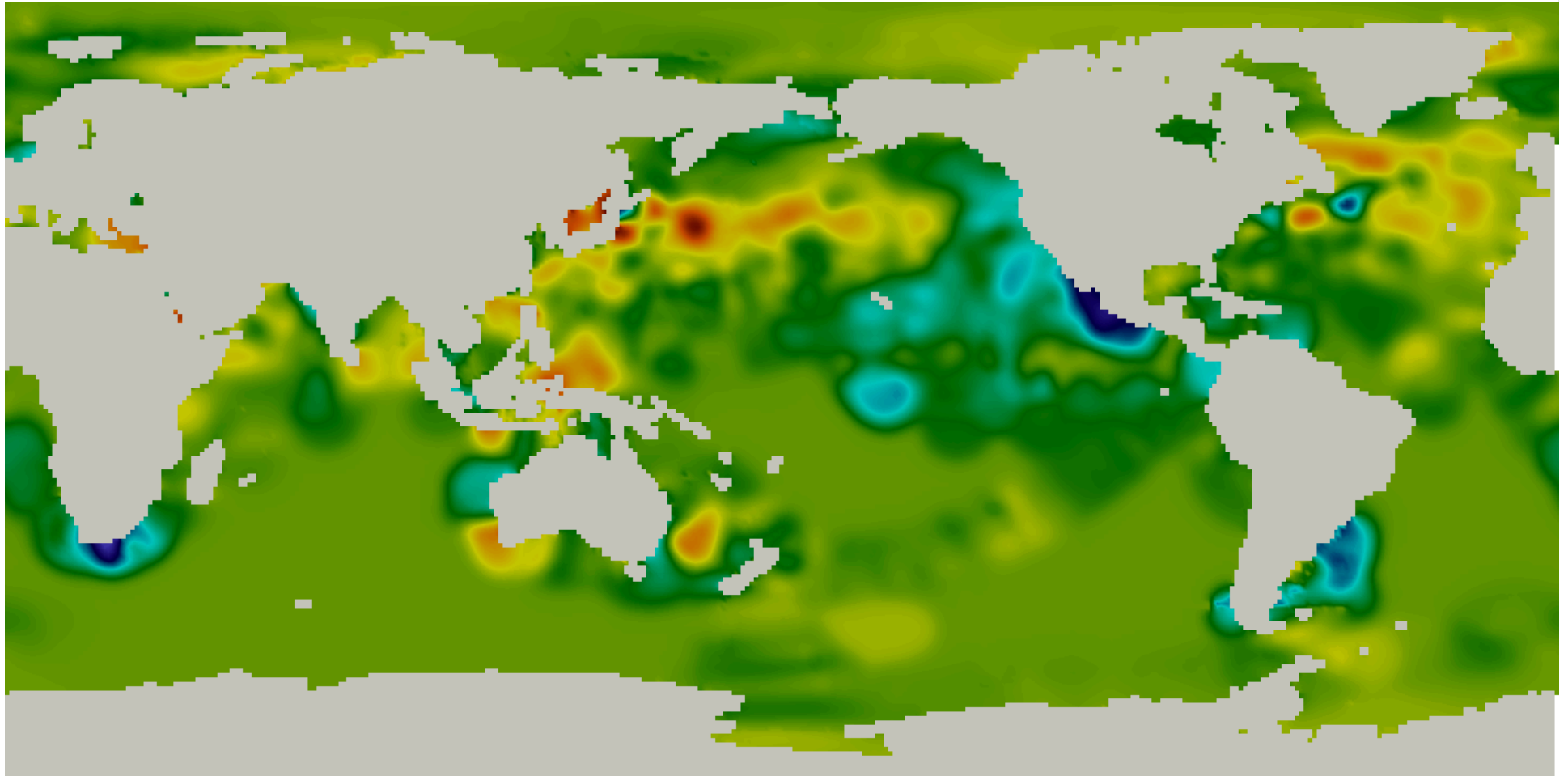
temperature



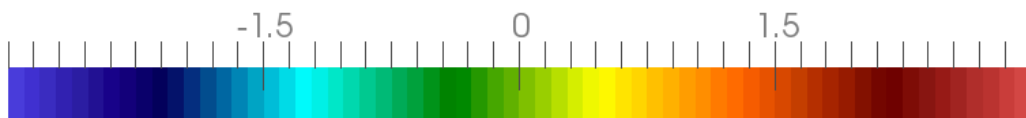


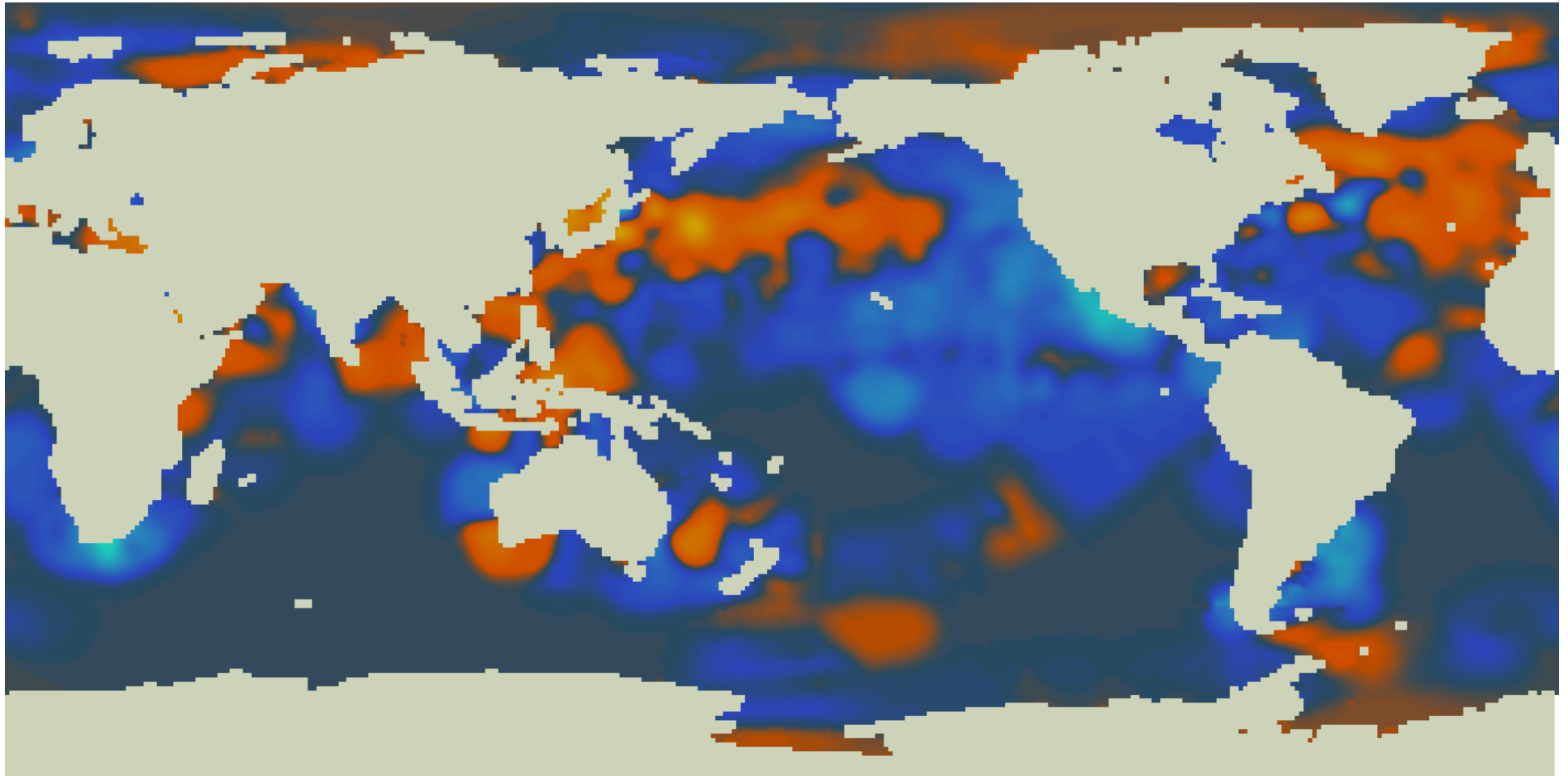
temperature



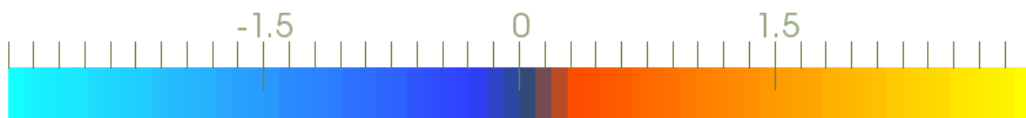


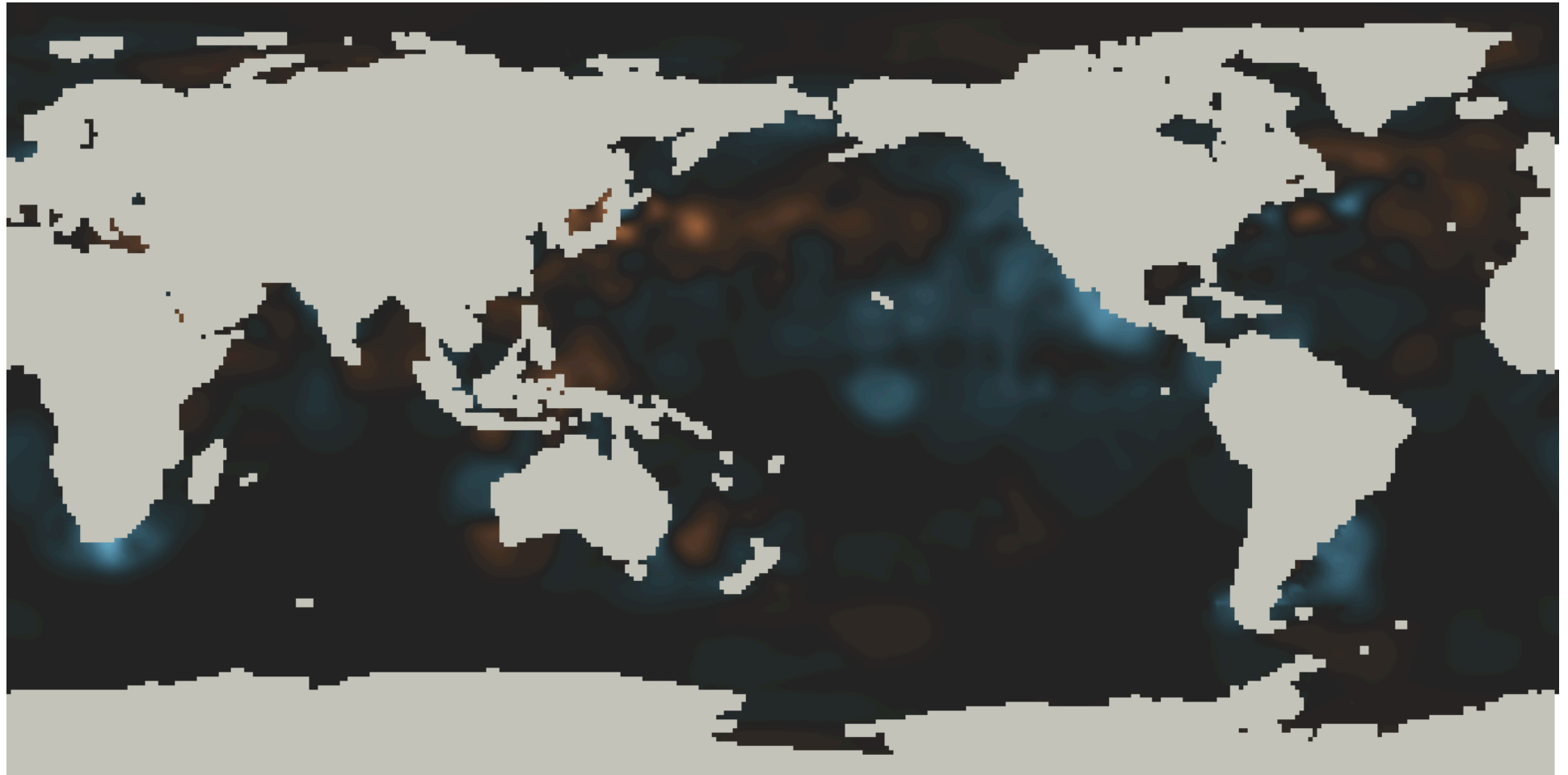
temperature



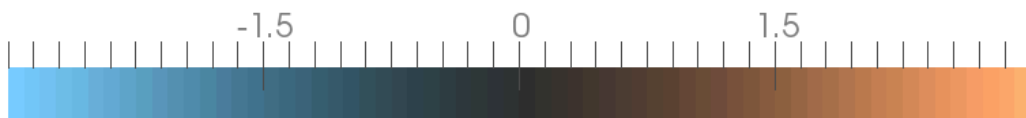


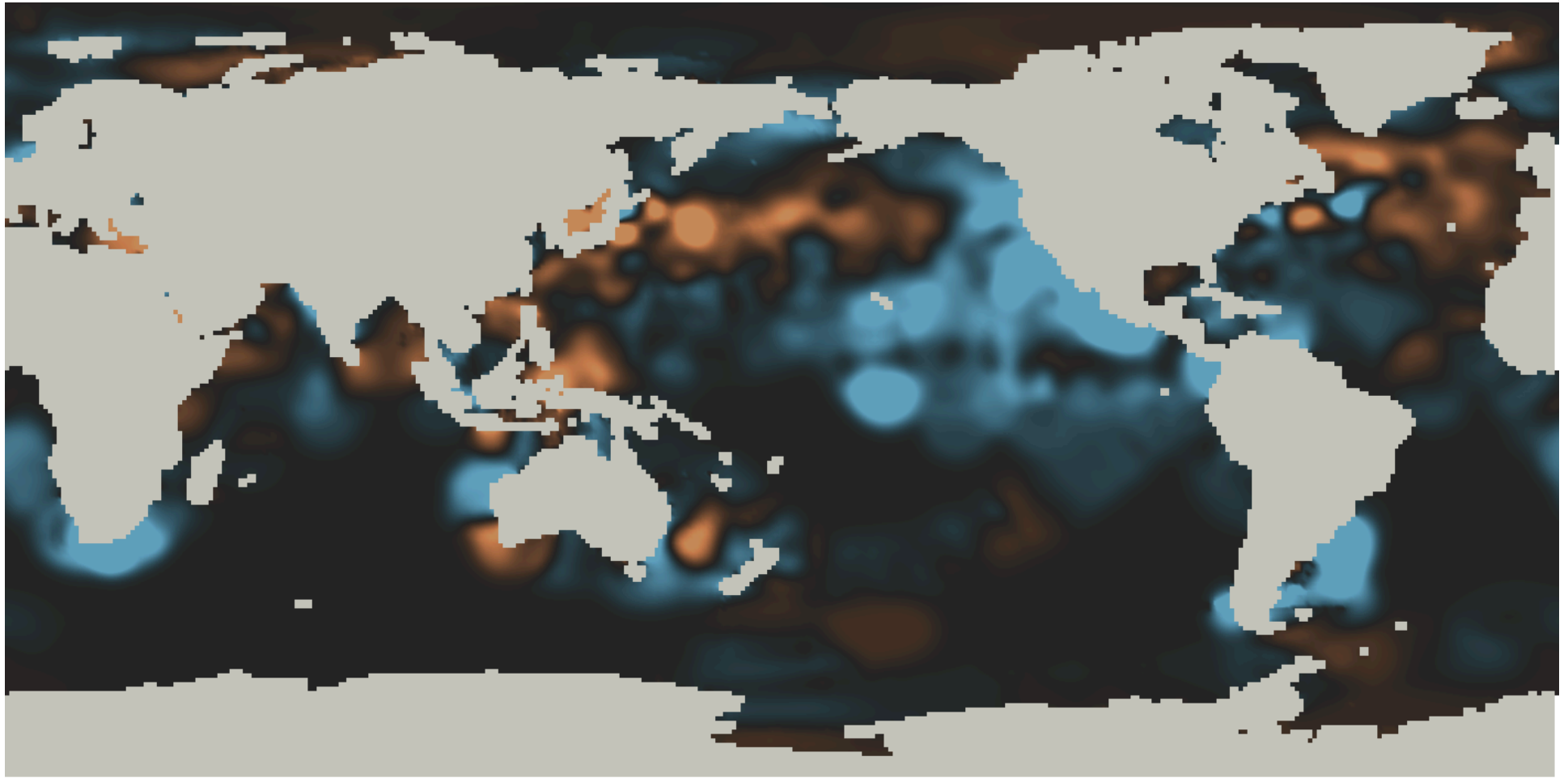
temperature





temperature





temperature

