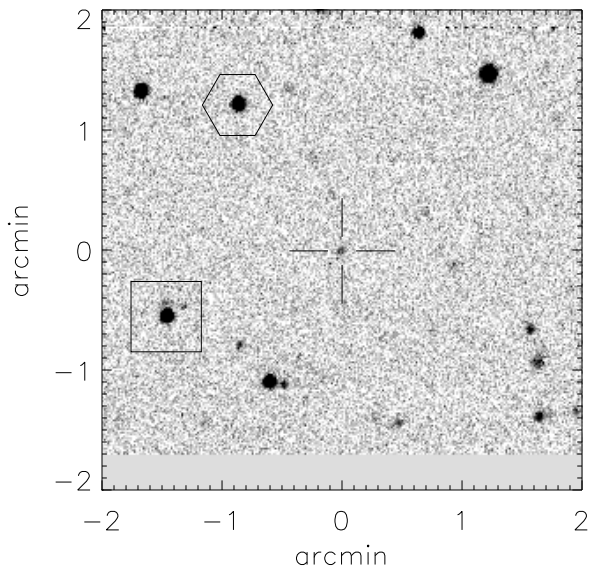


Finding chart for S2004-058

aka cand0702



CANDIDATE (cross):

RA (2000): 14 h 39 m 52.34 s

Dec(2000): +05 d 27' 40.6"

HEX Star: Mag: 16.68

RA (2000): 14 h 39 m 55.81 s

Dec(2000): +05 d 28' 53.8"

Offset (2000) to cand:

58.96" east, 83.49" south

BOX Star: Mag: 16.90

RA (2000): 14 h 39 m 58.19 s

Dec(2000): +05 d 27' 8.2"

Offset (2000) to cand:

99.55" east, 36.88" north

Offset (E,N,2000) to hex: -35.55", 105.63"

Overview Finder Chart

