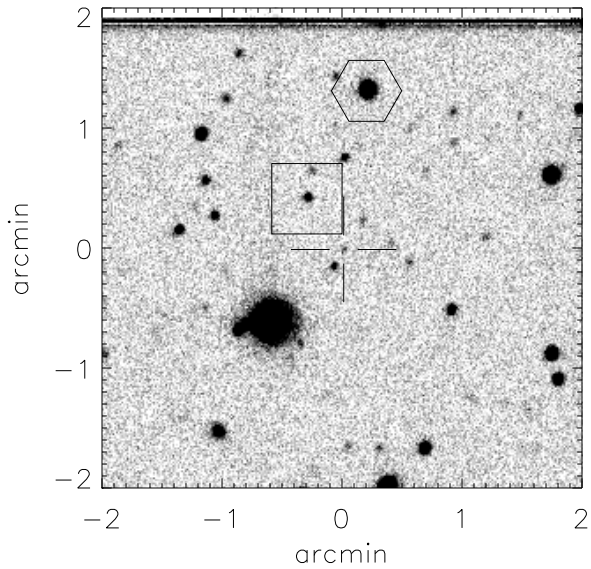


Finding chart for S2004-060

aka cand0704



CANDIDATE (cross):

RA (2000): 14 h 55 m 10.83 s

Dec(2000): +04 d 40' 16.2"

HEX Star: Mag: 14.74

RA (2000): 14 h 55 m 10.04 s

Dec(2000): +04 d 41' 35.9"

Offset (2000) to cand:

13.50" west, 90.74" south

BOX Star: Mag: 18.49

RA (2000): 14 h 55 m 12.03 s

Dec(2000): +04 d 40' 41.9"

Offset (2000) to cand:

20.41" east, 29.35" south

Offset (E,N,2000) to hex: -29.74", 53.92"

Overview Finder Chart

